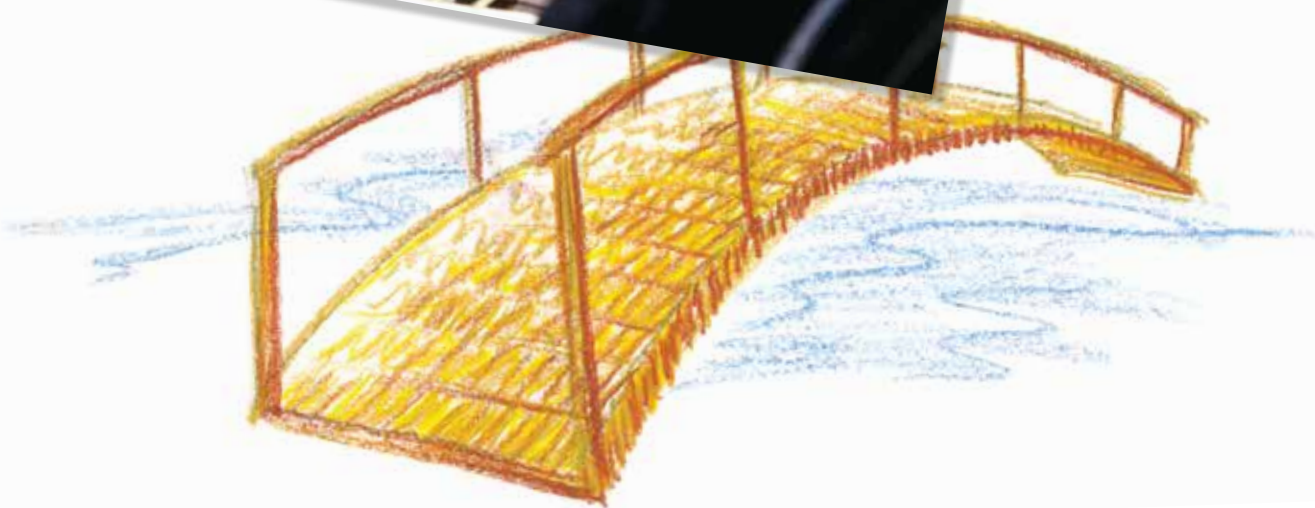


Network Comparison List

Effective January 1, 2017



Geoffrey Gomez,
Health Net
*Keeping our members
informed with all the
latest plan updates.*





Definition of Terms

Participating Physician Group (PPG) – a group of physicians, who are organized as a legal entity, that has an agreement in effect with Health Net to provide medical care to Health Net members. They are sometimes referred to as a “contracting physician group” or “a medical group.” An individual practice association may also be a physician group.

Primary Care Physician (PCP) – a physician who coordinates and controls the delivery of covered services and supplies to the member. PCPs include general and family practitioners, internists, pediatricians, and obstetricians/gynecologists.

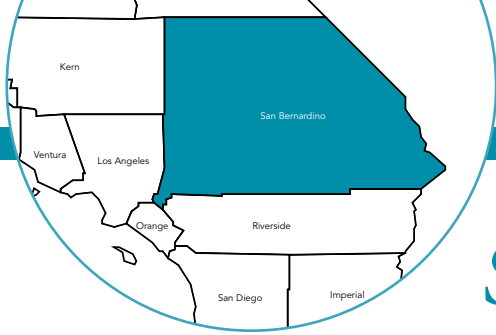
Participating Hospitals – A member’s PCP may find it necessary to refer the member to a hospital for further care on either an inpatient or outpatient basis. The member will usually be hospitalized where the PCP has admitting privileges. Log in to www.healthnet.com/providersearch for a list of hospitals where the PCP has admitting privileges. **Note:** The PCP must first be contacted for initial treatment and consultation before you receive any care or treatment through a hospital. Admission to, and treatment rendered by, any hospital must be authorized by your selected PCP. **If you feel that you are experiencing an emergency, call 911 immediately or go to the nearest ER.**

Full HMO Network – Available in all or parts of Alameda, Alpine, Amador, Butte, Calaveras, Colusa, Contra Costa, Del Norte, El Dorado, Fresno, Glenn, Humboldt, Kern, Kings, Lake, Lassen, Los Angeles, Madera, Mariposa, Marin, Mendocino, Merced, Modoc, Monterey, Napa, Nevada, Orange, Placer, Plumas, Riverside, Sacramento, San Benito, San Bernardino, San Diego, San Francisco, San Joaquin, San Luis Obispo, San Mateo, Santa Barbara, Santa Clara, Santa Cruz, Shasta, Sierra, Siskiyou, Solano, Sonoma, Stanislaus, Sutter, Tehama, Trinity, Tulare, Tuolumne, Ventura, Yolo, and Yuba counties.

SmartCare HMO Network – Available in all or parts of Los Angeles, Marin, Orange, Riverside, San Bernardino, San Diego, Santa Clara, and Santa Cruz counties.

ExcelCare HMO Network – Available in all or parts of Kern, Los Angeles, Orange, Riverside, San Bernardino, San Diego, San Francisco, Santa Clara, Stanislaus, and Ventura counties.

Salud HMO y Más Network – Available in Orange County and select ZIP codes of Kern, Los Angeles, Riverside, San Diego, and San Bernardino counties.



San Bernardino County

Participating physician groups	Full	WholeCare	SmartCare	Salud HMO y Más
Alliance Desert Physicians	✓	✓		
Beaver Medical Group	✓	✓	✓	
Beaver Medical Group – BAHC	✓	✓	✓	
Beaver Medical Group – Cooley Ranch office	✓	✓	✓	
Beaver Medical Group – Highland office	✓	✓	✓	
Beaver Medical Group – Yucaipa office	✓	✓	✓	
Chaffey Medical Group	✓	✓	✓	
Choice Medical Group, Inc.	✓	✓		
Coachella Valley Physicians	✓	✓		
Desert Valley Medical Group, Inc.	✓			
Dignity Health Medical Group – Inland Empire	✓	✓	✓	✓
EHS-Inland Valleys IPA – San Bernardino	✓	✓		✓
Fenix Health Medical Group	✓	✓	✓	
Hispanic Physicians IPA – San Bernardino	✓	✓	✓	✓
LaSalle Medical Associates – San Bernardino	✓	✓	✓	✓
My Family Medical Group	✓	✓	✓	
Pinnacle Medical Group	✓	✓	✓	
Pomona Valley Medical Group, Inc.	✓			
Premier Healthcare IPA / SJHH	✓	✓	✓	
PrimeCare Medical Group of Chino Valley	✓	✓		
PrimeCare Medical Group of Inland Valley, Inc.	✓	✓		
PrimeCare Medical Group of Moreno Valley	✓	✓		
PrimeCare Medical Group of Redlands, Inc.	✓	✓	✓	
PrimeCare Medical Group of San Bernardino, Inc.	✓	✓	✓	
PrimeCare of Citrus Valley, Inc.	✓	✓		
Redlands – Yucaipa Medical Group	✓	✓	✓	
Regal Medical Group of San Bernardino County	✓	✓		
San Bernardino Medical Group	✓	✓		
San Bernardino Medical Group – Sierra Lakes	✓	✓		
St. Mary High Desert Medical Group / SJHH	✓	✓	✓	
Upland Medical Group	✓	✓		
Valley Physicians Network, Inc.	✓	✓		
Vantage Medical Group – SB	✓	✓		
Victor Valley Medical Group	✓	✓		



This listing is a general guide only and is subject to change. For an up-to-date listing, please visit www.healthnet.com > [ProviderSearch](#).

(continued)

San Bernardino County (continued)

Important! This listing is a general guide only and is subject to change. It's important to note that PPGs and PCPs typically affiliate with specific hospitals. **Please confirm that the PPG and/or PCP is affiliated with the hospital listed prior to selecting a PCP.**

<i>Participating hospitals</i>	<i>Full</i>	<i>WholeCare</i>	<i>SmartCare</i>	<i>Salud HMO y Más</i>
Barstow Community Hospital	✓	✓		
Bear Valley Community Healthcare District	✓	✓		
Community Hospital of San Bernardino	✓	✓	✓	✓
Desert Valley Hospital	✓			
Hi-Desert Memorial Health Care District	✓	✓		
Loma Linda University Community Hospital	✓	✓	✓	
Mountains Community Hospital	✓	✓		
Redlands Community Hospital	✓	✓	✓	
San Antonio Regional Hospital	✓	✓	✓	
St. Bernardine Medical Center	✓	✓	✓	
St. Mary Medical Center	✓	✓	✓	

For more information please contact

Customer Contact Center

1-800-522-0088

www.healthnet.com

Important! This listing is a general guide only and is subject to change. It's important to note that PPGs and PCPs typically affiliate with specific hospitals. **Please confirm that the PPG and/or PCP is affiliated with the hospital listed prior to selecting a PCP.**