

Health Net's ProviderSearch

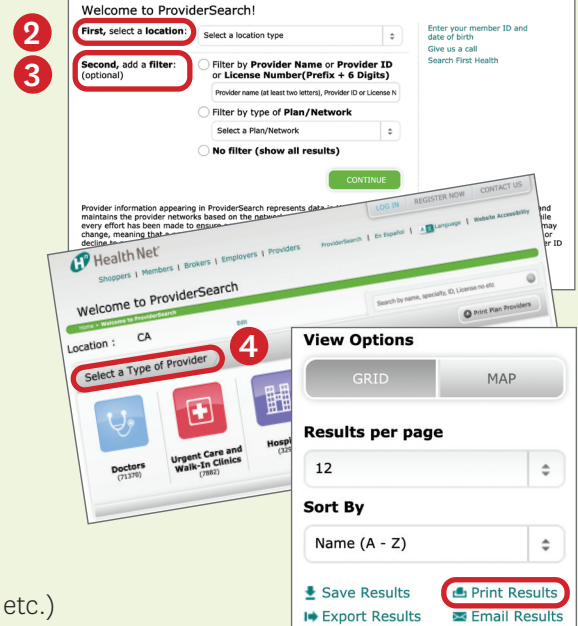
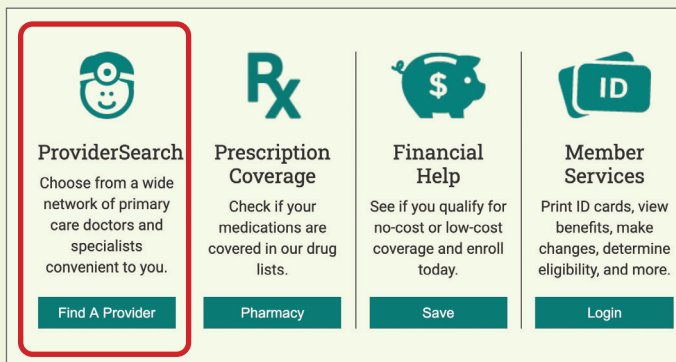
FIND A PHYSICIAN – FAST!

With ProviderSearch, you'll quickly find the most up-to-date listings of qualified in-network doctors, urgent care centers, hospitals, and other types of health care providers near your home or work.

Not yet registered online?

You can still use ProviderSearch! Here's how:

- 1 From our home page (www.healthnet.com), click on *Find a Provider*



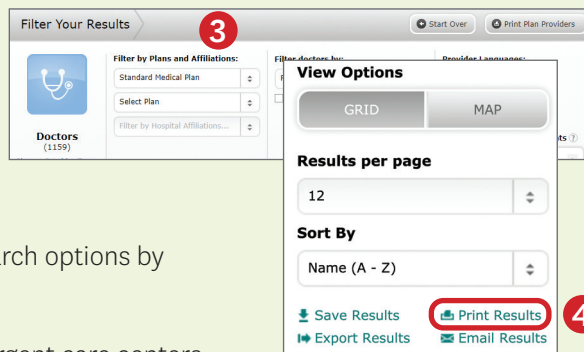
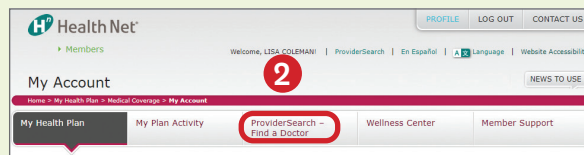
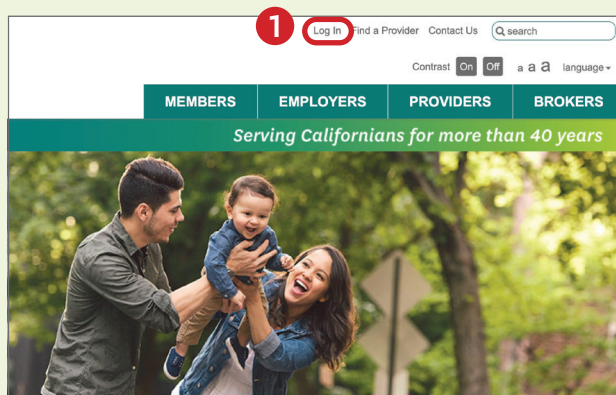
- 2 Enter a location (street address, city, county, or state).
- 3 Further narrow your search by Provider Name/ID/License Number or by Plan/Network.
- 4 Select a type of provider (Doctors, Hospital, Medical Group, etc.) to get your results.
- 5 Finally, you can click on *Print Results* to print your search results.

For more information, click the Give us a call link in the ProviderSearch box.

(continued)

Already a member?

- 1 Visit **www.healthnet.com**, and click the *Log In* button.



- 2 Click on the *Find a Provider* tab located at the top of the page. *ProviderSearch - Find a Provider* pre-loads your search options by your location.
- 3 Further narrow your search by provider type (physician, urgent care centers, hospital), plan type, specialties, gender, and languages spoken.
- 4 Finally, click on *Print Results* to print your search results.



Compare provider quality for better decisions

Once you're a member and registered on the Health Net website, we offer the Hospital Advisor comparison tool, giving you information that can help you choose high quality hospitals in our Health Net networks. Hospital Advisor gives you details about which hospitals have the most experience with specific conditions and procedures and other key information like patient experience ratings and safety of care. This tool includes access to the national Leapfrog Hospital Survey, a national leader in information about hospital quality and safety. You also get the Leapfrog Hospital Safety Score, which assigns hospitals an easy-to-use letter grade to indicate the overall safety of the hospital for patients.

Questions?

Call the number located on your member ID card.