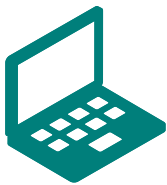


Effective October 1, 2019


SMALL BUSINESS GROUP



Central California



For an up-to-date listing,
please visit www.healthnet.com >
ProviderSearch.

 Participating physician groups	Full	WholeCare	SmartCare	Salud HMO y Más
KERN COUNTY				
Bakersfield Family Medical Center – Heritage Physician Network	✓	✓		
Dignity Health Medical Network – Central CA	✓	✓		
Independence Medical Group	✓	✓		✓
SANTA BARBARA COUNTY				
Jackson Medical Group – Goleta	✓	✓		
Physicians Choice Medical Group of Santa Maria	✓	✓		
Sansum Clinic – 1225 North H St.	✓	✓		
Sansum Clinic – 51 Hitchcock Way	✓	✓		
Sansum Clinic – SBIMG	✓	✓		
Santa Barbara Select IPA Medical Group	✓			
TULARE COUNTY				
Family HealthCare Network – Cutler-Orosi	✓	✓		
Family HealthCare Network – Farmersville	✓	✓		
Family HealthCare Network – Goshen	✓	✓		
Family HealthCare Network – Hanford	✓	✓		
Family HealthCare Network – Ivanhoe	✓	✓		
Family HealthCare Network – Pixley	✓	✓		
Family HealthCare Network – Porterville	✓	✓		
Family HealthCare Network – Porterville Downtown	✓	✓		
Family HealthCare Network – School	✓	✓		
Family HealthCare Network – Springville	✓	✓		
Family HealthCare Network – Strathmore	✓	✓		
Family HealthCare Network – Terra Bella	✓	✓		
Family HealthCare Network – Three Rivers	✓	✓		
Family HealthCare Network – Traver	✓	✓		
Family HealthCare Network – Tulare	✓	✓		
Family HealthCare Network – Tulare Pediatrics	✓	✓		
Family HealthCare Network – Visalia	✓	✓		
Family HealthCare Network – Visalia Mooney	✓	✓		
Family HealthCare Network – Visalia Oak	✓	✓		
Family HealthCare Network – Woodlake	✓	✓		
Healthy Hearts Medical Group DBA Orchard Medical Center	✓	✓		
Kaweah Delta Dinuba Health Clinic	✓	✓		
Kaweah Delta Exeter Health Clinic	✓	✓		
Kaweah Delta Family Medicine Center	✓	✓		
Kaweah Delta Lindsay Health Clinic	✓	✓		
Kaweah Delta Medical Foundation	✓	✓		

(continued)

IMPORTANT! This listing is only a guide and is subject to change. As a rule, PPGs and PCPs affiliate with specific hospitals. **Please confirm that the PPG and or PCP is affiliated with the hospital listed before choosing a PCP.**

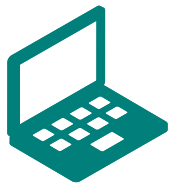
Effective October 1, 2019

SMALL BUSINESS GROUP

Central California (continued)

Participating physician groups	Full	WholeCare	SmartCare	Salud HMO y Más
Kaweah Delta Woodlake Health Clinic	✓	✓		
Key Medical Group, Inc.	✓	✓		
United Health Centers	✓			
VENTURA COUNTY				
Facey Medical Foundation – Simi Valley	✓	✓		
Regal Medical Group – Ventura	✓	✓		
Seaview IPA	✓	✓		
Valley Care IPA	✓	✓		

Participating hospitals	Full	WholeCare	SmartCare	Salud HMO y Más
KERN COUNTY				
Adventist Health Medical Center Tehachapi	✓	✓		
Bakersfield Heart Hospital	✓	✓		
Bakersfield Memorial Hospital	✓	✓		
Delano Regional Medical Center	✓	✓		
Kern Medical Center	✓	✓		✓
Kern Valley Hospital	✓	✓		
Mercy Hospital	✓	✓		
Mercy Hospital Bakersfield	✓	✓		
Ridgecrest Regional Hospital	✓	✓		
San Joaquin Community Hospital	✓	✓		
SANTA BARBARA COUNTY				
Goleta Valley Cottage Hospital	✓			
Lompoc Valley Medical Center	✓	✓		
Marian Regional Medical Center	✓	✓		
Santa Barbara Cottage Hospital	✓	✓		
Santa Ynez Valley Cottage Hospital	✓			
TULARE COUNTY				
Kaweah Delta District Hospital	✓	✓		
Sierra View District Hospital	✓	✓		
VENTURA COUNTY				
Community Memorial Hospital of San Buenaventura	✓	✓		
Los Robles Regional Medical Center	✓			
Ojai Valley Community Hospital	✓	✓		
Santa Paula Hospital	✓	✓		
Simi Valley Hospital and Health Care Services	✓	✓		
St. John's Pleasant Valley Hospital	✓	✓		
St. John's Regional Medical Center	✓	✓		
Ventura County Medical Center	✓			



For an up-to-date listing,
please visit www.healthnet.com >
ProviderSearch.

IMPORTANT! This listing is only a guide and is subject to change. As a rule, PPGs and PCPs affiliate with specific hospitals. **Please confirm that the PPG and or PCP is affiliated with the hospital listed before choosing a PCP.**

Definition of Terms



Participating Physician Group (PPG)

A group of doctors, set up as a legal entity, that has an agreement with Health Net to provide medical care to Health Net members. PPGs are sometimes referred to as a

“contracting physician group” or a “medical group.” An individual practice association may also be a PPG.



Primary Care Physician (PCP)

A doctor who manages and directs the delivery of covered health care services and supplies to the member. PCPs include general and family practitioners, internists, pediatricians, obstetricians and gynecologists.



Participating Hospitals

A member’s PCP may need to refer them to a hospital for further care.

The PCP will refer the member to a hospital where the PCP has admitting privileges. Log in to www.healthnet.com/ProviderSearch for a list of hospitals where the PCP has admitting privileges.

Note: Members must first contact their PCP for medical care and advice before they receive treatment through a hospital. The PCP must authorize hospital admission and treatment.

In an emergency, the member should call 911 or go to the nearest ER.



Full and WholeCare HMO Networks

Available in all or parts of Alameda, Contra Costa, El Dorado, Fresno, Kern, Kings, Los Angeles, Madera, Marin, Merced, Napa, Nevada, Orange, Placer, Riverside, Sacramento, San Bernardino, San Diego, San Francisco, San Joaquin, San Mateo, Santa Barbara, Santa Clara, Santa Cruz, Solano, Sonoma, Stanislaus, Tulare, Ventura, and Yolo counties.



SmartCare HMO Network

Available in all or parts of Los Angeles, Orange, Riverside, San Bernardino, San Diego, Santa Clara, and Santa Cruz counties.



Salud HMO y Más Network

Available in Orange County and select ZIP codes of Kern, Los Angeles, Riverside, San Bernardino, and San Diego counties.

IMPORTANT! This listing is only a guide and is subject to change. As a rule, PPGs and PCPs affiliate with specific hospitals.

Please confirm that the PPG and or PCP is affiliated with the hospital listed before choosing a PCP.

For more information, please contact:

CUSTOMER CONTACT CENTER

1-800-522-0088

HealthNet.com