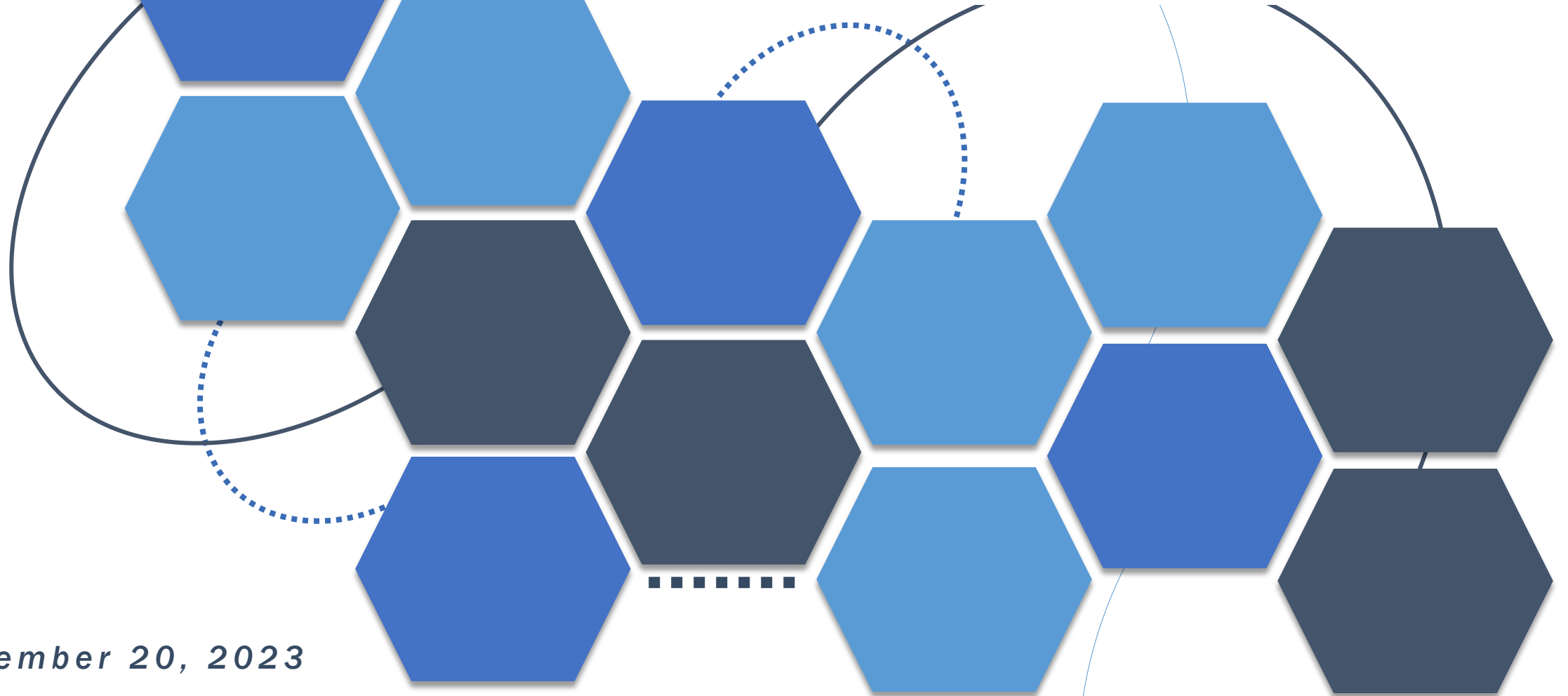


*Community Supports
Webinar Series*

HOUSING DEPOSITS



September 20, 2023



AGENDA

- Welcome and Introductions
- Learning Objectives
- Housing Deposits Overview
- Member Example
- Continuity of Care Concepts

Welcome and Housekeeping



This webinar is being recorded



Attendance will be tracked via log-in



Send a message to the host if you cannot hear or see the slides



After the webinar you will get a copy of the PowerPoint and recording link



Participants are automatically MUTED. Please communicate via the chat



If we are unable to address your questions in today's webinar, we will address your questions in an upcoming forum



WELCOME AND INTRODUCTIONS



**Nancy Wongvipat Kalev, MPH, Health Net
Senior Director, Systems of Care**

Today's Presenters



**Anthony Federico, MA, MPA
Health Management Associates**



**Flint Michels, RN, MBA, MHSA
Health Management Associates**

Learning Objectives

- Describe key aspects of the Housing Deposits Community Supports
- Explain key purpose and value of Housing Deposits CS and how referrals are made
- Explain how other Community Supports relate to Housing Deposits

What challenges have you, as a provider, experienced with using this Community Support?



Defining Housing Deposits



- Housing Deposits assist with identifying, coordinating, securing, or **funding one-time services and modifications necessary to enable a person to establish a basic household.**

This may include:

- Security deposits required to obtain a lease on an apartment or home.
- Set-up fees/deposits for utilities or service access and utility arrearages.
- First month coverage of utilities, including but not limited to telephone, gas, electricity, heating, and water.
- First month's and last month's rent as required by landlord for occupancy.
- Services necessary for the individual's health and safety, such as pest eradication and one-time cleaning prior to occupancy.
- Goods such as an air conditioner or heater, and other medically-necessary adaptive aids and services (Hoyer lifts, air filters, specialized cleaning or pest control, and more)

Housing Deposits: Examples

Item

Security Deposit (includes one housing application)

First Month's Rent

Last Month's Rent

Utility Deposit (electricity, heat, gas, water, phone)

Cleaning Service

Fumigation

Mattress

Microwave

Refrigerator

Dining Table & Chairs

Hoyer Lift

Hospital Bed

Traditional move-in deposits. But also ...

services, and ...

furnishings and equipment!

Side note: There are maximum amounts on some of these items. Verify with MCPs via auth request.

Housing Deposits Key Elements

DHCS:

- **Housing Deposit Eligibility-** Housing Deposits are available once in an individual's lifetime.
- **Housing Deposits can only be approved one additional time with documentation as to what conditions have changed to demonstrate why providing Housing Deposits would be more successful on the second attempt.**
- **Plans are expected to make a good faith effort to review information available to them to determine if individual has previously received Housing Deposits funds.**

HealthNet:

- **Max of \$6,000**
- **Once in a lifetime**
- **Prior authorization is key!**

Note: HN provider must retain documentation: lease, receipts, etc.

Critical Information

In order to qualify, members must:

Must be in Housing Navigation

Specific move-in needs identified

Need for HD must be documented in Housing Support Plan

Must be homeless but housing identified for move-in

NOTE: Room and board, or ongoing rent, are not eligible under Housing Deposits. Just initial costs

Please check with each MCP for further eligibility and authorization criteria!

Connecting the Dots:

Street-to-housing pathway of Medi-Cal supports

Housing Transition
Navigation Service

Housing Deposit

Housing Tenancy
Sustaining Service

Care team explores additional
member needs, eligibility and
linkage ->

MTM

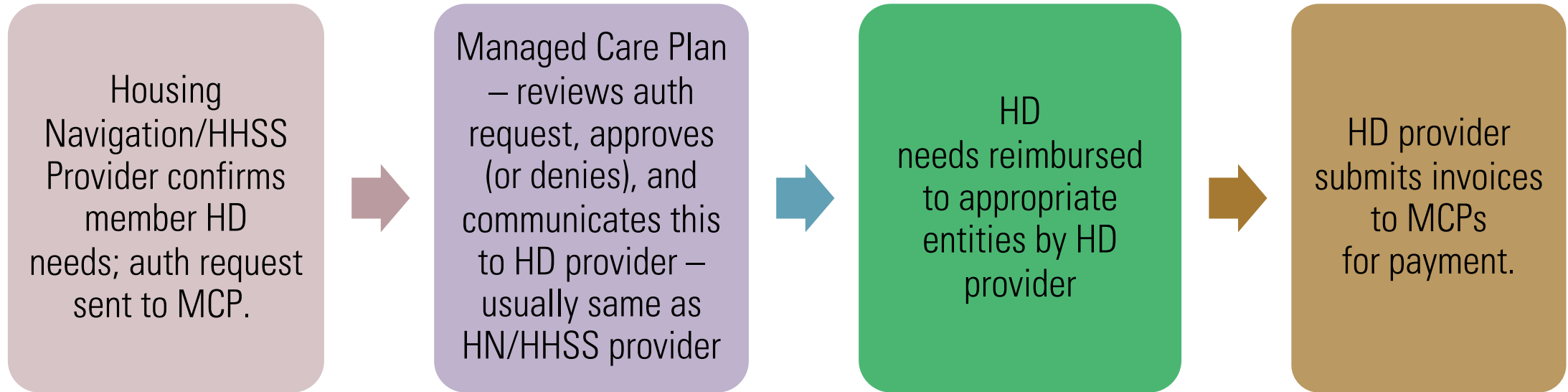
EEA

Primary
Care

ECM

Other
Medi-Cal
supports

Referral Pathways



Referral Pathways



Referral links for HealthNet:

To make a referral, use findhelp.org

To understand HealthNet's overall referral process, use [Community Supports End-to-End Process | Health Net](#)

MEET SARAH

- Sarah is a senior health plan member experiencing homelessness.
- A Housing Navigator is helping her find housing opportunities – and together, they found a good fit!
- However, Sarah needs additional support to move-in successfully.
- Is Sarah a good candidate for the Housing Deposits Community Support?
- Which of the following items can be provided under Housing Deposits?
 - Security deposit for property owner
 - First and last month's rent
 - Air conditioner
 - Microwave
 - Television
 - Bathroom grab bars
- What other Community Supports might she need?



*QUESTIONS?
(IF TIME
ALLOWS)*




THANK YOU!!!! BEFORE YOU GO...

Please Complete the Evaluation of Today's Session

**Once the webinar has concluded,
the survey will pop-up in a
separate browser.**

Save the Date for next Webinar – October 18th, 2023!

The next Webinar content will be on Medically-Tailored Meals and other Food-Related Supports in the Community (MTM).



*ADDITIONAL
RESOURCES*

RESOURCES/LINKS

- CS Policy Guide: <https://www.dhcs.ca.gov/Documents/MCQMD/DHCS-Community-Supports-Policy-Guide.pdf>
- CalAIM for Providers: [CalAIM Resources for Providers | Health Net](#)
- CalAIM for Members: [CalAIM Resources for Members | Health Net](#)
- Community Supports for Members: [Community Supports Resources | Health Net](#)

Community Supports Available Statewide

Community Support Service	HealthNet
Housing Transition/Navigation*	✓
Housing Deposits	✓
Housing Tenancy & Sustaining Services*	✓
Short-Term Post-Hospitalization Housing	✓
Recuperative Care (Medical Respite)	✓
Day Habilitation Programs	✓
Nursing Facility Transition/ Diversion	✓
Community Transition Services/Nursing Facility Transition to a Home	✓
Personal Care and Homemaker Services	✓
Respite Services for Caregivers	✓
Environmental Accessibility Adaptations	✓
Medically Supportive Food/ Meals/ Medically Tailored Meals	✓
Sobering Centers	✓
Asthma Remediation	✓

GLOSSARY OF TERMS

- CS – Community Supports
- DC - Discharge
- EAA – Environmental Accessibility Adaptions
- ECM – Enhanced Care Management
- HHSS – Housing Support Services
- MCP – Managed Care Plan (Health Plan)
- PCP – Primary Care Provider
- STPHH – Short Term Post-Hospitalization Housing

